

# Perspective



2001 NAE4-HA Communicator Award Winner



## 2001-02 Officers

### ◆ PRESIDENT

#### **Carol Laverty**

Harper County OCES

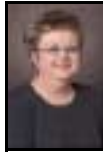
Box 108

1001 N. Hoy

Buffalo, OK 73834-0180

Office and Fax: 580-735-2252

E-mail: lavertc@okstate.edu



### ◆ PRESIDENT-ELECT

#### **Radonna Sawatzky**

Custer County OCES

Box 170 Courthouse

Arapaho, OK 73620

Office 580-323-2291

Fax 580-323-2296

E-mail: radonna@okstate.edu



### ◆ PAST PRESIDENT

#### **Susan Meitl**

Canadian County OCES

Box 519, Fairgrounds

El Reno, OK 73036-0519

Office: 405-262-0155

Fax: 405-262-2267

E-mail: meitl@okstate.edu



### ◆ VICE-PRESIDENT

#### **Janice Cranor**

Osage County OCES

628 Kihekah, 2nd Floor

Pawhuska, OK 74056

Office: 918-287-4170

Fax: 918-287-4175

E-mail: mjanice@okstate.edu



### ◆ SECRETARY

#### **Lynne Beam**

Stephens County OCES

101 S. 11th, Room 113

Duncan, OK 73533

Office: 580-255-0510

Fax: 580-255-0442

E-mail: beamd@okstate.edu.



### ◆ TREASURER

#### **Alan VanDeventer**

Comanche County OCES

315 SW 5th St., Rm 207

Lawton, OK 73501

Office: 580-355-1176

Fax: 580-353-5898

E-mail: avandev@okstate.edu



## President's Message

**It's Ours to Claim!** This is a great challenge as we make preparations to fulfill "OUR" dream - the 2004 National Meeting.

As youth educators, we know every day can be a challenge and every day is important. If I have lived a day in my life and haven't made a difference to myself or to someone else than that day has been wasted. I'm sure that is a very big reason why we are Extension Professionals.

Serving our organization as President has been a very fulfilling experience. Thank you for giving me the opportunity to meet presidents from all across the nation and for making such wonderful friends in the Southern Region. My only word of advice is to not wait until you are 50 years old to be an officer because it will help you with your career. But the good news is "We are never too old to learn."

Julie and Ed from North Carolina will be at our State Conference to give us the boost that we need right now.

This is such an exciting time in our Association as we are working together with teams of people that we haven't had the opportunity to work with. All three associations have a vested interest in this conference.

John Maxwell has a quote that fits the county Extension Educator: "A person who is successful has simply formed the habit of doing

things that unsuccessful people will not do."

How many times have you set up for the county fair sweating and exhausted on a 110 degree August day? How many of you have walked the hallways at a 4-H conference to protect 4-Hers from themselves? How many of you have cleaned the bathrooms at your fairgrounds - you know that goes along with your job description.

Yes, to be called an Extension Educator we have to be willing to do what others aren't willing to do. Is it fair?

Probably not, but everyone has the best youth to work with in the Oklahoma 4-H program.

I'm looking forward to seeing each of you at our state conference and know that it will be great.

I will leave you with this last thought, *"A ship in a harbor is safe, but that is not what ships are made for."*

Speaking of ships—make plans to go to Norfolk Virginia in 2002 and we will see real ships.

**Carol Laverty**

OAE4-HA President

### Special points of Interest:

- Youth and Money
- National 4-H Hall of Fame
- 2002 Annual Conference
- 2002-03 Officer Candidates

## Family Economic Well-Being Impact Team

### Youth and Money

How do our youth really learn to manage money? Most don't until they're adults and then they learn primarily as a result of their own successes and failures.

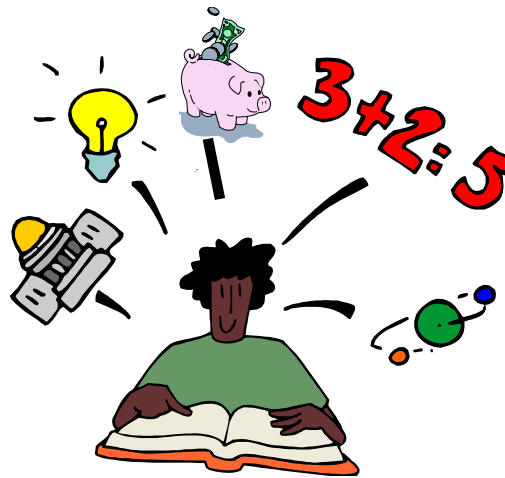
There's usually no course at school, no helpful hints on TV and observing parents can be confusing at best. Typically, parent's money management skills are often either not what we'd like them to be or our finances are so complex that how we handle our money doesn't mean much to a child.

To make matters worse, kids today have more money to spend and develop financial styles at a younger age than ever. Before you know it, kids can develop bad habits that can last a lifetime.

Most parents don't deal with their kids money management problems until their children are adults. By then, these problems can be both costly and emotional. Young children provide parents the best opportunity to encourage good financial habits and avoid problems that will develop later in life.

The only way youth learn to manage their money is through their own experience and the guidance, we as educators, may give them.

Youth learn from trial and error and role models just like the rest of us. And if they can't learn as children, the price of adult mistakes can be great in terms of money and relationships.



### What's your type? Saver or Spender

Teens sometimes find it most difficult to save money and make smart money choices because of peer pressure. The tendency is to spend, spend, spend and worry about the consequences later. Here's a few questions to get them thinking.

- Do you know, within a dollar or two, how much money you have in your possession at this moment?  
A. Yes, I know almost to the penny how much I have.  
B. Haven't got a clue.
- You get \$15 every Sunday to buy your lunches for the following week:  
A. You usually spend only what you have to, and try to save part of the money to use on the weekend.  
B. You're almost out of money by Wednesday.
- You go to the store to buy one item.  
A. You buy the one item and leave the store.  
B. You buy the one item, but also purchase gum and a magazine.

### Budgeting

Setting up and using a budget is a good idea. Having one puts you in control of your finances and helps you avoid money pitfalls. It forces you to look at what you spend your money on and will tell you exactly what you can spend. Youth who learn to develop budgets learn life-long financial habits.

#### Budgeting Terms:

**Routine Expenses:** expenses that remain relatively the same, week after week, month after month. This could include rent, insurance, food and entertainment.

**Nonroutine Expenses:** expenses that are easy to forget about because they don't occur regularly. This could include medical, car repairs, gifts, etc.

**Fixed Expenses:** costs that don't vary much from month to month. They include rent, car payments, health club dues, etc.

**Variable Expenses:** expenses that are variable change from month to month. They might include entertainment costs, vacations, food, clothing and utilities.

**Nondiscretionary Expenses:** These are necessary costs you can't get away from. They include housing, food, utilities, taxes and car payments.

**Discretionary Expenses:** If an expense is discretionary, it's not necessary. They include vacations, memberships, entertainment, and so forth.

## Family Economic Well-Being Impact Team



The FCS/4-H Family Economic Well-Being Impact Team focuses on improving the financial well-being of families in Oklahoma by instructing and encouraging clientele to reduce debt and increase savings.

### Curriculum:

- ✓ *Money 2000 & Beyond*
- ✓ *Keys to Successful Money Management*
- ✓ *Pathways to Success*
- ✓ *Money My Way: The Basics for Young Entrepreneurs*
- ✓ *NEFE High School Financial Planning Program*
- ✓ *Children and Money*

### Website:

<http://www.fcs.okstate.edu/money>

## Money Doesn't Grow On Trees!

Unfortunately, the above saying is true, but it doesn't mean there are not ways to save money for a CD player, clothes, computer, car or for college.

Youth need to set goals for themselves and it all begins with making a commitment to save.

Youth whose family put emphasis on saving usually find it easier than those whose families don't value this as much.

First consider all of the factors that affect your personal ability to save money.

Add up all of the income (part-time job, allowance, etc.) and expenses. Subtract expenses from your income. From these figures you should be able to determine the amount you can reasonably save each week or month. Choose a savings schedule that fits you best.

Regardless of how much you decide to save, stick with it and do it consistently.

It's difficult to get started saving, but it's even more difficult to start again once you've stopped. Saving is difficult in the short run, but worth it in the long run.



## Volunteer Core Competencies which blend with Family Economic Well-Being

All of us have been encouraged to blend our chosen impact area and basic core competencies into existing programs for volunteers. Below are just a few competencies that complement this impact teams purpose.

CC1 – Promote and encourage the mission of 4-H: education and youth development.

CC1 – Role of educator, parent and volunteers is to guide and assist in the selection and development of well-rounded project work, activities and events.

CC1 – Encourage club use of the Monthly Program Planning

Guide to focus educational programming on Money Management related issues for one program year.

CC2—Short and long term goal setting.

CC2 - Targeting Life Skills Model: Keeping Records, Wise Use of Resources, Goal Setting and Planning/Organizing.

CC2 - Encourage piggybacking and identifying Consumer Education/Record Keeping within all project work.

CC2 – Encourage the development of local project groups related to financial matters.

## Pay Yourself First!

A good way to think about the money that you designate as savings is to consider it your “pay”. And you should always pay yourself first.

The best way is to automatically deposit money from your paycheck and place it in a savings account.



Think of saving money as doing a favor for yourself. There's no amount too small to save. Even saving \$1 a week will add up. Anything you can save is better than nothing at all.



*Submitted by David Sorrell, Executive Director, Oklahoma 4-H Foundation*

The Oklahoma 4-H Alumni Association has officially been in existence for six months. We have 21 4-H members that have recruited about 100 alumni members. That's not a lot but it is a start.

The purpose of this association is to provide an opportunity for former 4-H members to stay connected with old 4-H friends and become involved with current 4-H activities.

The fee for an annual single membership is \$20. The membership fee for a couple is \$30 per year. A life membership is \$200, which can be paid through \$50 installments. High School graduates will receive their first year of membership free.

Members joining the Oklahoma Alumni Association will receive a membership card, an alumni window sticker, quarterly issues of Foundation News, and invitations to 4-H Alumni events.

The association was set up so that a portion of the membership fees would fund current 4-H members' trips and education expenses. Sixty percent of an alumni membership fee would go directly to a specific current 4-H member as designated by the alumni member.

The remaining 40 percent of the fee would be used by the Oklahoma 4-H Foundation to provide additional financial support for trips and scholarships as well as 4-H alumni services.

It is critical that we maintain a relationship with those who are a part of our rich 4-H tradition.

As Martha Stewart would say "this is a good thing" I encourage each of you to remind your 4-H members and volunteers of this opportunity.

## Mary Sue Sanders Inducted Into National 4-H Hall of Fame

*Submitted by Gina Shutte, Coordinator, Special Programs & Promotions*

As a youth, Mary Sue Sanders was inspired by her 4-H educators to dedicate her life to 4-H youth development. She was a successful and dedicated 4-H member who went on to become an equally successful and dedicated 4-H educator in Oklahoma.

In 1961, Mary Sue began her professional career in extension, serving as an Assistant Home Demonstration Agent. She served as State Assistant Program Specialist, EFNEP Coordinator, District 4-H Specialist and retired as a County 4-H Educator.

Sanders' major 4-H project as a youth was Home Improvement. If Extension is her home and 4-H is her family, she has been doing Home Improvement her whole life.

During her professional career, she published 4-H leader training materials, state awards handbook, 4-H club and member planning guides, county report forms, and the *4-H Personality Improvement Workbook*. Mary Sue developed and taught numerous lessons and workshops over the years, but her focus concentrated on volunteer leader development and character education.

In 1992 Mary Sue retired, but she continues to devote herself to working for Oklahoma's 4-H youth. As a retiree, she set out to fulfill her dream of creating an Oklahoma 4-H Ambassador Program, and she accomplished just that two years later in 1994.

Today, Mary Sue is the volunteer coordinator of the Ambassador program she created. In its eight-year history, she has served as advisor, teacher and mother to each of the program's 122 past and current members.

Sanders recently retired from a six-year term serving as treasurer for the Oklahoma 4-H Foundation. Mary Sue is also a charter member of the Oklahoma 4-H Circle of Champions donor group.

In celebrating the centennial of 4-H, the National Association of Extension 4-H Agents has created the National 4-H Hall of Fame to honor outstanding individuals in 4-H, with 100 inductees, each representing one of the 100 years since the organization's beginnings in 1902.

The National Hall of Fame Inductee Celebration was held during National 4-H Conference on April 11, 2002 at the National 4-H Center in Chevy Chase, Maryland. This ceremony proudly recognized and celebrated those people who have made a significant impact on 4-H and the lives of millions of members.

Responding to the invitation to this historical ceremony to receive the esteemed award, Mary Sue said, "It is very humbling, but I am honored to represent the Oklahoma 4-H members, volunteers, and alumni as a part of the 100th anniversary of the 4-H program. This award belongs to all of them with special emphasis on the great teams of state 4-H Ambassadors and the Oklahoma state 4-H staff that I have had the privilege to work with since 1993." Mary Sue Sanders truly has made the best better.



**OAE4-HA Congratulates Mary Sue!**

## 2002 Professional Development Conference

*Submitted by Tracy Branch and Tom Manske, Professional Improvement Committee*

Registration form is enclosed. Deadline: July 10th

### It's Ours to Claim! 2002 Conference Schedule Holiday Inn Airport, Oklahoma City

#### Wednesday, July 31, 2002

11:30 am-1:00 pm	Registration
1:00 pm	Opening Session Business Meeting Officer Election
2:00 pm	Part 1 - "Planning a National Meeting", Ed Emory and Julie Landry, North Carolina Cooperative Extension Service, 1993 NAE4-HA Conference Co-Chairs
6:30 pm	Picnic (sponsored by Oklahoma Pork Council) Auction

#### Thursday, August 1, 2002

7-8:00 am	Breakfast Buffet
7:30-8:15 am	Registration
8:30 am	Part 2 - "Planning a National Meeting", Ed Emory and Julie Landry, North Carolina Cooperative Extension Service, 1993 NAE4-HA Conference Co-Chairs
11:00 am - 5:00 pm	Exhibits Open
11:30 am	Lunch Buffet
1:00-3:30 pm	Educator Quiz Bowl
4:00-6:30 pm	Free Time and Officer Training
6:30 pm	Awards Banquet

#### Friday, August 2, 2002

7:30-8:30 am	Breakfast Buffet
7:30-8:30 am	Board Breakfast w/Administration
9:00 am	Business Meeting Adjourn

## Auction Items and Door Prizes Needed

*Submitted by Lisa Hamblin, Auction Coordinator*

The 4th annual OAE4-HA auction will be held during annual conference on Wednesday evening, July 31, 2002.

Each district is asked to provide 5-8 (or more) nice items for this event and 5-6 door prizes for drawings held throughout the conference.

Last year, over \$2900 was raised to go toward hosting the national meeting in 2004. We hope to do even better this year.

District Directors for OAE4-HA will be coordinating this effort. If you have items to donate, contact:

SW - Kristy Spalding

NW - Bart Cardwell

NE - Charlotte Richert

SE - Greg Owen

or Lisa Hamblin, Auction Coordinator at the Oklahoma County Extension office at (405) 713-1125.

## 2002-03 Officer Candidates

*Submitted by Susan Meitl, Nominating Committee*

Elections will be held for the following offices at the 2002 Annual Conference, Wednesday, July 31, 2002:

### Nominees for President-Elect



Dixie Ferrell  
Extension Educator  
FCS/4-H Youth Dev.  
Roger Mills County



Kristy Spalding  
Extension Educator  
FCS/4-H Youth Dev.  
Washita County

### Nominees for Vice-President:



Travis Battles  
Extension Educator  
4-H Youth Dev.  
Rogers County



Tracy Lane  
Extension Educator  
4-H Youth Dev.  
Tulsa County

### Nominees for Secretary:



Brenda Miller  
Extension Educator  
FCS/4-H  
Okmulgee County



Gloria King  
Extension Educator  
FCS/4-H Youth Dev.  
Beckham County

## Oklahoma Association of Extension 4-H Agents

OAE4-HA Perspective  
2515 W. 92nd  
Perkins, OK 74059



A special thanks to Oklahoma Extension Association of Family and Consumer Sciences (OEAFCSS) for voting to donate \$4,000 to the 2004 NAE4-HA Conference. Please express thanks to your co-workers and especially Marilyn Berousek for suggesting the donation of \$1,000 for each "H".

## The Association Member Who Never Came Back

OAE4-HA has experienced an increase in membership over the last year. We have many new faces and some who have re-joined us. Please make an effort to sit with someone new, introduce them to others and help them understand the "workings" of our Association.

Keep this in mind—

It amuses me now to think that your Association spends so much time looking for new members—when I was there all the time. Do you remember me?

I'm the member who came to every meeting and annual conference but nobody paid any attention to me. I tried several times to be friendly and ask questions

about getting involved with a committee, but everyone seemed to have their own friends to talk to and sit with.

I hoped someone would ask me to participate and contribute—but no one did.

Finally, I missed a few meetings and didn't get a newsletter so I decided I could find better things to do with my time. No one ever asked me where I had been.

You might say I'm a good person and educator. I have a nice family, lots of friends and I am very active in my community.

You know who else I am? I'm the Association member who never came back.

Adapted from "The 4-H Member Who Never Came Back", OK 4-H Volunteer Core Competencies, Unit 1 and Voluntary Action Leadership, Fall 1984.



### "To Make the Best Better"

The *Perspective Newsletter* is published quarterly by the Oklahoma Association of Extension 4-H Agents, 2515 W. 92nd, Perkins, OK 74059, (405) 744-5304 (Becky), (405) 744-8891 (Karla).

Information for the newsletter will be due the first Friday of the following months: Oct., Jan., April, and July. Issues will be published in Nov., Feb., May, and Aug.

**E-mail information to [rlw@okstate.edu](mailto:rlw@okstate.edu) or [kknoepf@okstate.edu](mailto:kknoepf@okstate.edu).** Articles may be edited for content and space.

The *Perspective* is one way of communicating educational information and updates to members and friends of 4-H.

The OCES offers its programs to all eligible persons regardless of race, color, national origin, gender, religion, age, disability, or status as a Vietnam-era veteran and is an equal opportunity employer.

**Perspective Editor:** Becky Walker

**Committee:** Karla Knoepfli, Cathy James, and Nancy Tucker.